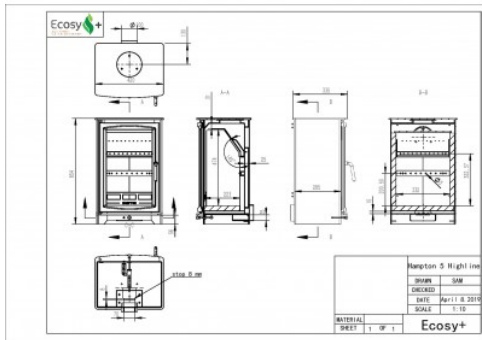




- ☆ Top quality wood burning stoves direct to you at trade prices.
- ☆ Speedy delivery. ☆ Long guarantees. ☆ Hundreds of 5 star reviews.

Defra Approved Hampton Highline 5kw - Custom Grey

Brand: Hampton Collection
Product Code: HAMPHIGH



Defra Approved Hampton Highline 5kw - Custom Grey

2022 Eco Design Ready

The Defra Approved Hampton Highline 5 is one of the most up to date and cleanest wood burning stoves sold in the UK. This model not only meets but exceeds the government's tough requirements. It has been tested and approved to meet the new Ecodesign requirements that will be mandatory for all stoves by 2022, making this a stove for now and for the future. Find out more about the Ecodesign scheme at stoveindustryalliance.com.

The Technology

The Hampton 5 boasts some of the lowest combined readings of NOx, CO and dust of any wood burning stove sold in the UK. In response to the government's initiatives to lower such emissions from wood burning stoves, you can rest assured that you have one of the cleanest stoves for sale in the UK. This unrivalled clean burn has been achieved by the quality engineering exhibited in all Hampton models. All bodies are made from thick steel plate that is perfectly folded and welded together, ensuring no unwanted air can leak into the stove. We confidently offer a 7 year warranty on this product.

Crystal Clear Glass

The Hampton Highline's air supply is drawn into the fire low down at the stoves rear, the air races up and over the stoves chamber until it is unveiled and drops like a curtain over the stoves glass. This system is a very effective way of keeping the glass clean and clear of smoke stains.

Custom Finish

This unique colour is a firm favourite of everyone at Stove World UK HQ. We find it looks different in the changing light and has hints of Brown and Copper as the sunlight hits it. A perfect fit for someone looking for a unit that is truly unique. This version will be hand-finished by stove professionals here at Stove World UK. The whole unit will be stripped and repainted with the highest quality Calfire paint. Calfire is well respected in the industry because their paints are not only great-looking but highly durable.

7 Year Guarantee

This covers the stove's body and not the internal perishable parts like grates and fire bricks. Guarantee is activated when the stove is invoiced. 6 digit number on the top of each invoice is the warranty number. For stove to be covered it must be installed by a HETAS engineer or signed off by building control.

DEFRA Approved

The Hampton has been rigorously tested and approved to burn wood in a smoke controlled zones. Defra approved stoves with 5" flue outlets, like this one, can also be installed with a 5" liner.

Stove Features

- ★ **2022 Eco Design Ready**
- ★ **DEFRA APPROVED**
- ★ **Over 81.30% efficient**
- ★ **Woodburning only with flat fire brick base**
- ★ **Distance to combustible materials at the rear (100mm with heat shield and 375mm without)**
- ★ **Distance to combustible materials at the side (550mm)**
- ★ **Suitable for 12mm hearth.**
- ★ **Adaptable for a direct air feed - 100mm spigot at the rear.**
- ★ **Design and Tested in the UK**
- ★ Top and rear flue outlet included with a flue box as an additional extra
- ★ Full vermiculite brick lining and base
- ★ Finished in heat resistant matt black paint or burnt Grey
- ★ Flue diameter 125mm (5") with choice of top or rear flue outlet
- ★ Gross weight - 95kg
- ★ Pre-heated air wash system to help keep the glass clean
- ★ Tertiary air system that re-burns the smoke for a clean and efficient burn.
- ★ Height : 654mm, 25.74 inches. Width: 420mm, 16.53 inches. Depth : 335mm 13.18 inches.
- ★ Distance from the back of stove to centre of top flue 130mm 5.1 inches.
- ★ Distance from floor to centre of rear flue outlet 530mm - 20.70 inches.
- ★ 125mm 5" top and rear flue collar included.
- ★ Glass Size - 480mm High x 300mm Wide
- ★ Internal stove dimensions - H: 440mm W: 320mm D: 210mm

Stove Construction

Body - 10mm thick steel top (combined) and 5mm thick steel plate sides.

Grate - No grate required - Wood burns on the vermiculite base

Fire brick - Vermiculite

Why Are We So Cheap?

We design and make a large amount of our products, including the Ecosy+ brand, and they come direct from our factory to us, meaning we can effectively sell stoves at trade prices direct to the public. We can stock over 2,500 wood burning stoves at any one time and ship direct to the customer with no showrooms. Take a look at our glowing feedback, with over 7,000 positive comments on our stoves and stove products.

Optional Extras

This unit comes with three optional extras; The first being a heat shield that reduces the distances to combustibles to just 100mm, perfect for free standing installs. The second is a vertical rear flue box that makes some installations a lot easier and gives the user a flat top, perfect for cooking. The final option is the cool to touch wooden handle that gives the stove a very unique and stylish look for no extra cost.

Defra Approved Hampton Highline 5kw - Custom Grey

Stove Fittings

Fittings	Option of brushed chrome handle as standard or hand made wooden grip fitting that is cool to touch
Baffle Plate	Steel baffle plate that can be removed

Stove Features

Legs	Fixed
Grate	No Grate - Woodburning only
Efficiency	Very efficient "Huge saving on bills" Slow Burn (Efficient)
Cleaning	Pre heated airwash system
Seals	Heat resistant fire rope seals

Stove Dimensions

Height	654mm
Width	420mm
Depth	335mm
Distance from back of stove to centre of top flue outlet	130mm
Distance from floor to centre of rear flue outlet	382mm
Outlets	125mm 5" top and rear flue collar included
Power	5kw

 All stoves and accessories delivered in two to three days.